



MiiNePort E3 Series Quick Installation Guide

First Edition, September 2011

Overview

The Moxa MiiNePort E3 series serial-to-Ethernet embedded modules come in 4 models: standard operating temperature (MiiNePort E3, MiiNePort E3-H) and wide operating temperature (MiiNePort E3-T, MiiNePort E3-H-T). Moxa provides a starter kit for each MiiNePort E3 series module; each starter kit contains an evaluation board that can be used to evaluate the modules and to develop your own applications. The following table lists the model names of all MiiNePort E3 series modules, along with the model names of the corresponding starter kits.

Available Modules

- MiiNePort E3: Embedded device server for TTL devices, pin header module, 10/100M with RJ45 connector, 50 bps to 230.4 Kbps baudrate, 0 to 55°C operating temperature
- MiiNePort E3-H: Embedded device server for TTL devices, pin header module, 10/100M with RJ45 connector, 50 bps to 921.6 Kbps baudrate, 0 to 55°C operating temperature
- MiiNePort E3-T: Embedded device server for TTL devices, pin header module, 10/100M with RJ45 connector, 50 bps to 230.4 Kbps baudrate, -40 to 85°C operating temperature
- MiiNePort E3-H-T: Embedded device server for TTL devices, pin header module, 10/100M with RJ45 connector, 50 bps to 921.6 Kbps baudrate, -40 to 85°C operating temperature

Available Starter Kits

- MiiNePort E3-ST: Starter kit for the MiiNePort E3 Series, module included
- MiiNePort E3-H-ST: Starter kit for the MiiNePort E3-H Series, module included

Package Checklist

Each MiiNePort E3 series starter kit package contains the following items:

- MiiNePort E3 module (MiiNePort E3 or MiiNePort E3-H only)
- MiiNePort E3 evaluation board
- Universal power adaptor
- 2 power cords
- Null modem serial cable
- Cross-over Ethernet cable
- 2 flat cables
- 1 Pack Screw and Spacer
- Document and Software CD
- Quick Installation Guide
- Warranty Card

Note: Please notify your sales representative if any of the above items are missing or damaged.

Hardware Installation Procedure

Follow these steps to prepare the module and evaluation board for testing and application development.

- 1:** Mount the MiiNePort E3 module on the top of the evaluation board.



ATTENTION

For detailed information about the pin assignments, wiring, and board layouts, refer to Chapters 1 and 2 of the MiiNePort E3 Series User's Manual.

- 2:** Connect the 12 to 48 VDC power line to the evaluation board's power jack.
- 3:** Switch on the power switch.
- 4:** Use an RJ45 Ethernet cable to connect the MiiNePort E3 module to an Ethernet network.
- 5:** Use the serial data cable to connect the evaluation board to a serial device.

Software Utility Installation Procedure

Use the following procedure to install the MiiNePort E3:

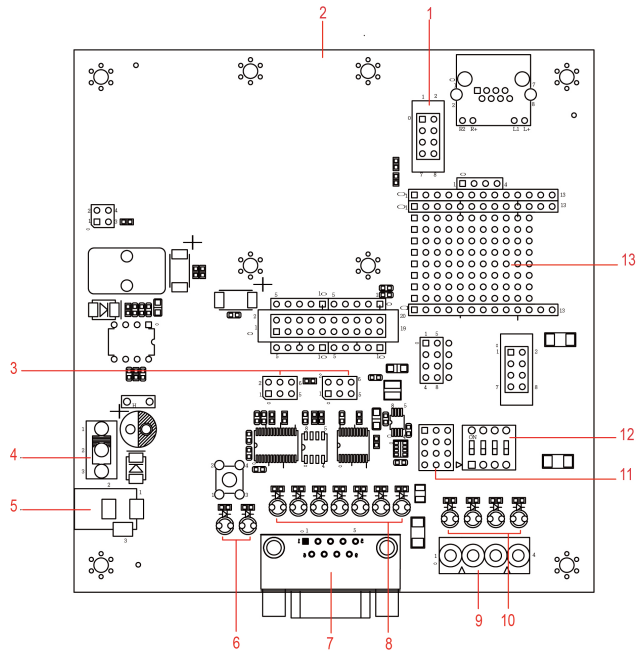
Software Installation

1. Start the NPort Search Utility setup program to begin the installation. When the Welcome window opens, click Next.
2. Click Install to install program files in the default directory.
3. The Installing window reports the progress of the installation.
4. Click Finish to complete the installation.

Module Configuration

1. Start the NPort Search Utility program.
2. Select the Search function from the function icons.
3. After the search is finished, all MiiNePort E3 modules that were found will be shown in the search window. If you locate more than one module connected to this network, refer to the MAC address on the module(s) to determine the modules you wish to configure.
4. Double click on the MiiNePort E3 module you wish to configure; your web browser will be activated with the MiiNePort E3's web console.
5. Refer to Chapter 7 of the MiiNePort E3 Series User's Manual for additional configuration instructions.

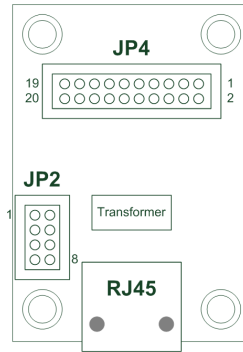
Evaluation Board Layout



Number	Description
1	PoE Pin
2	MiiNePort E3 Module Location
3	Serial Interface Jumper
4	Power Switch
5	Power Jack
6	Power & Ready LED
7	DB9 Male Connector
8	Serial Port Status LED
9	Digital IO Terminal Block
10	Digital Output LED
11	Digital Input/Output Mode
12	Digital Input Switch
13	Circuit Pad

Module Pin Assignment

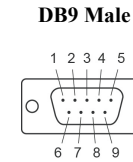
Bottom of the MiiNePort E3 Series Module



Ethernet Pins (JP2)		
Pin	Signal Name	Function
1	Reserve	N/A
2	Reserve	N/A
3	Reserve	N/A
4	Reserve	N/A
5	PoE signal pair 1	PoE power from Tx signal
6	PoE spare pair 1	PoE power from RJ454 4, 5 pin
7	PoE signal pair 2	PoE power from Rx signal
8	PoE spare pair 2	PoE power from RJ45 7, 8 pin

Serial Pins and Power Pins (JP4)		
Pin	Signal Name	Function
1	Serial Rx	Receive Serial Data
2	Ready LED	System to Ready LED
3	Serial Tx	Transmit Serial Data
4	GPIO	Programmable I/O
5	DCD	Receive Line Signal Detector
6	GPIO	Programmable I/O
7	RS485_EN0	RS-485 Enabled
8	GPIO	Programmable I/O
9	RTS	Request to Send
10	GPIO	Programmable I/O
11	DTR	Data Terminal Ready
12	Reserve	N/A
13	DSR	Data Set Ready
14	Reserve	N/A
15	CTS	Clear to Send
16	SW_Reset	Reset to Factory Default
17	Reserve	N/A
18	Reserve	N/A
19	GND	Circuit Ground
20	VCC	Power Supply

Evaluation Board Serial Port



Pin	RS232	RS485-2W
1	DCD	--
2	RxD	--
3	TxD	D+
4	DTR	D-
5	GND	GND
6	DSR	--
7	RTS	--
8	CTS	--
9	--	--

Reference Material

A detailed user's guides can be found on the Documentation and Software CD that came with your MiiNePort E3 series product.

Certification



This product complies with Chinese RoHS (Restriction of Hazardous Substances) regulations for Electronic Information Products.

MOXA® www.moxa.com/support

The Americas: +1-714-528-6777 (toll-free: 1-888-669-2872)
 Europe: +49-89-3 70 03 99-0
 Asia-Pacific: +886-2-8919-1230
 China: +86-21-5258-9955 (toll-free: 800-820-5036)

© 2010 Moxa Inc. All rights reserved.