

USR-TCP232-306 User Manual

File Version: V1.0.1.01



Contents

| | |
|--|-----------|
| USR-TCP232-306 User Manual | 1 |
| Features | 3 |
| 1. Get Start | 4 |
| 1.1. Application Diagram..... | 4 |
| 1.2. Hardware Design..... | 5 |
| 1.2.1. Hardware Dimensions | 5 |
| 1.2.2. DB9 Pin definition..... | 5 |
| 1.2.3. RS422/RS485 Pin definition | 6 |
| 1.2.4. LED..... | 6 |
| 2. Product Functions | 7 |
| 2.1. Basic Functions..... | 7 |
| 2.1.1. Static IP/DHCP | 7 |
| 2.1.2. Restore default settings | 8 |
| 2.1.3. Upgrade Firmware Version | 8 |
| 2.2. Socket functions | 9 |
| 2.2.1. TCP Client | 9 |
| 2.2.2. TCP Server..... | 10 |
| 2.2.3. UDP Client | 11 |
| 2.2.4. UDP Server | 13 |
| 2.2.5. HTTPD Client..... | 14 |
| 2.3. Serial port..... | 14 |
| 2.3.1. Serial port basic parameters | 14 |
| 2.3.2. VCOM Application | 15 |
| 2.3.3. Serial Package Methods | 15 |
| 2.3.4. Baud Rate Synchronization..... | 15 |
| 2.4. Features..... | 16 |
| 2.4.1. Identity Packet Function | 16 |
| 2.4.2. Heartbeat Packet Function | 17 |
| 2.4.3. Editable Web server | 17 |
| 2.4.4. Reset function..... | 17 |
| 2.4.5. Index function | 18 |
| 2.4.6. TCP Server setting..... | 19 |
| 2.4.7. Non-persistent Connection | 20 |
| 2.4.8. Timeout Reset function | 20 |
| 3. Parameter Setting..... | 21 |
| 3.1. Setup software Configuration..... | 21 |
| 3.2. Web Server Configuration | 21 |
| 3.3. AT Command..... | 22 |
| 3.3.1. Serial AT Command | 22 |
| 4. Contact Us..... | 23 |
| 5. Disclaimer..... | 23 |
| 6. Update History | 23 |

Features

- 10/100Mbps Ethernet port, support Auto-MDI/MDIX.
- Support TCP Server, TCP Client, UDP Client, UDP Server, HTTPD Client.
- Support Baud rate from 600bps to 230.4bps; Support None, Odd, Even, Mark, Space.
- Support heartbeat packet and identity packet.
- Support RS232, RS485 and RS422.
- Support web server, AT command and setup software to configure module.
- Support timeout reset function.
- Support TCP Client non-persistent function.
- Support DHCP/Static IP.
- Support software/hardware reload.
- Support virtual serial port with USR-VCOM software.

1. Get Start

Product link:

<http://www.usriot.com/p/serial-rs232-rs485-rs422-to-ethernet/>

Setup software:

<http://www.usriot.com/usr-m0-setup-software/>



Affordable Serial RS232/485/422 to Ethernet Converter

USR-TCP232-306 Serial RS232 RS485 RS422 Ethernet Converter is a cost-effective solution for serial data communication.

Share



- RS232/RS484/RS422 (not use simultaneously)
- 5-36v DC
- HTTPD client mode, sends serial data in HTTP format

USR IOT Service

Support:
FAE@usriot.com

Order:
sales@usriot.com



Figure 1 Download Page

If you have any question, please submit it back to customer center: <http://h.usriot.com>

1.1. Application Diagram



Figure 2 Application diagram

1.2. Hardware Design

1.2.1. Hardware Dimensions

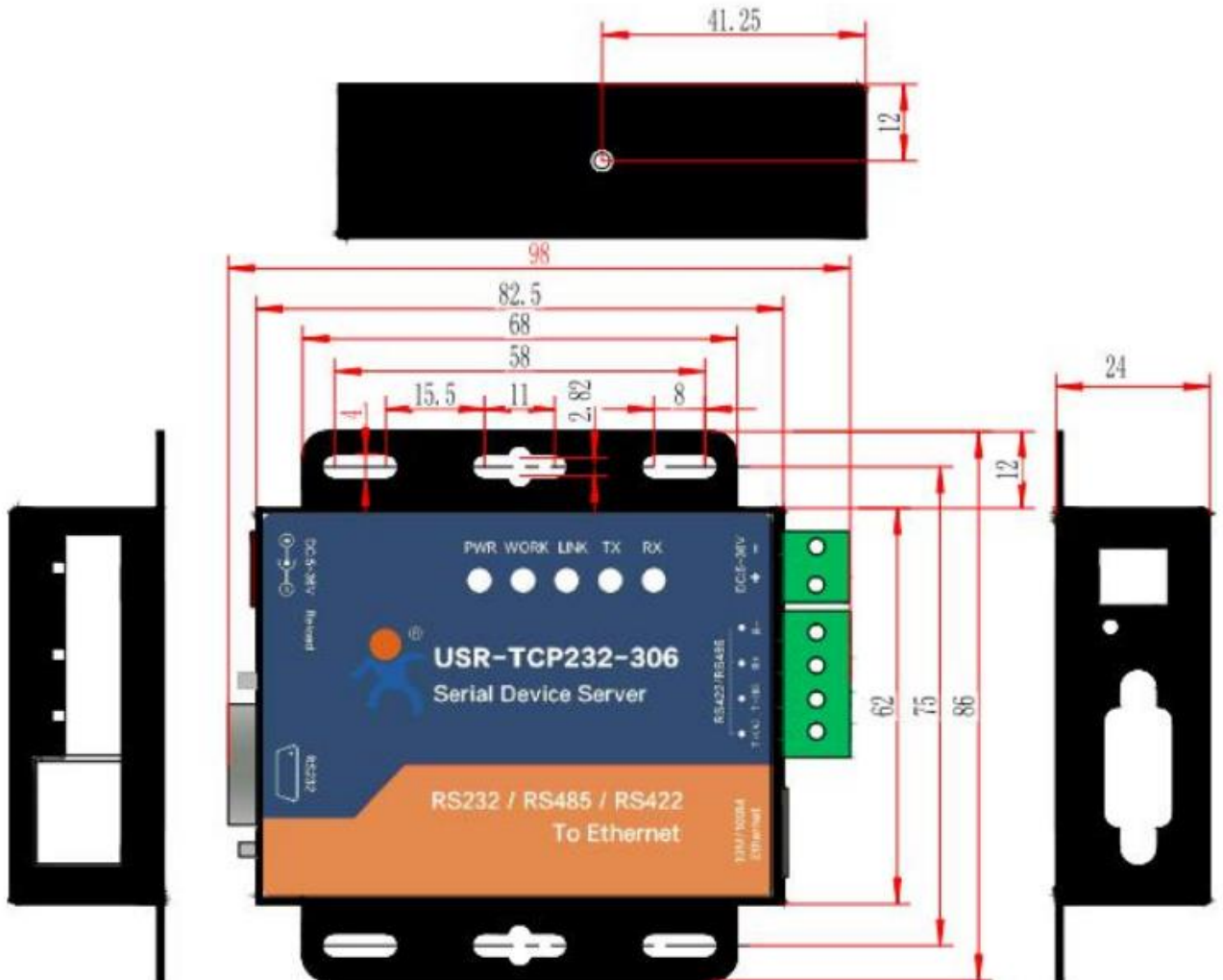
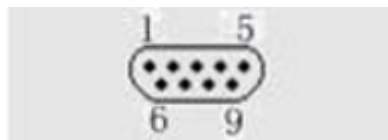


Figure 3 Hardware dimensions

1.2.2. DB9 Pin definition



| Pin | 2 | 3 | 5 | 1, 4, 6, 7, 8 | 9 |
|------------|-----|-----|-----|---------------|--------------------------------------|
| Definition | RXD | TXD | GND | NC | Default NC, can be used as power pin |

Figure 4 DB9 Pin

1.2.3. RS422/RS485 Pin definition

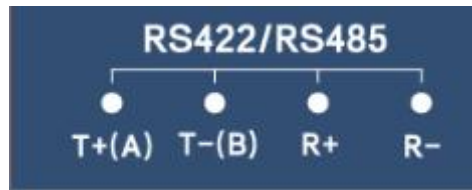


Figure 5 RS422/RS485 pin definition

RS422: R+/R- are RS422 RXD pins and T+/T- are RS422 TXD pins.

RS485: A/B are RS485 RXD/TXD pins.

1.2.4. LED

| Indicator | Status |
|-----------|--|
| PWR | On: Power on |
| | Off: Power off |
| WORK | Flash a period every one second: Working normally |
| | Flash a period every 200ms: Upgrading status |
| | Off: Not working |
| LINK | LED for Link function. Link function can only work in TCP Client/Server mode. TCP connection established, LINK on; TCP connection disconnect normally, LINK off immediately; TCP connection disconnect abnormally, Link off with about 40 seconds delay. |
| | Enable Link function in UDP mode, LINK on. |
| TX | On: Sending data to serial |
| | Off: No data sending to serial |
| RX | On: Receiving data from serial |
| | Off: No data receiving from serial |

Figure 6 LED

2. Product Functions

This chapter introduces the functions of USR-TCP232-306 as the following diagram shown, you can get an overall knowledge of it.

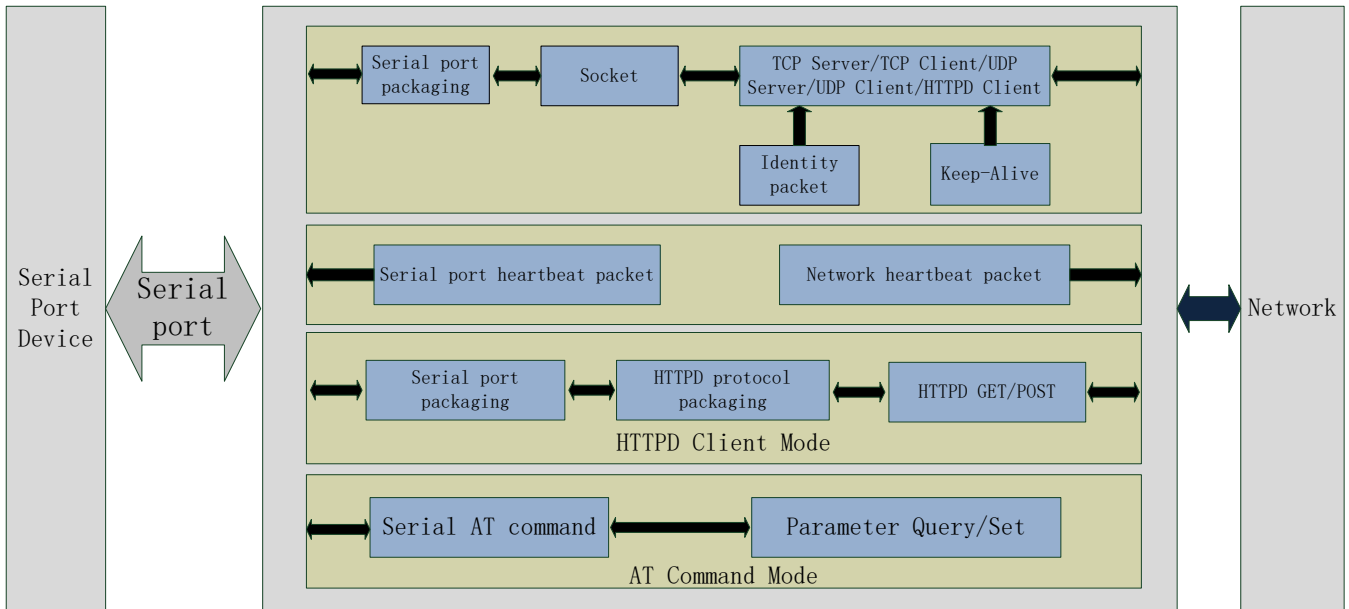


Figure 7 Product Functions diagram

2.1. Basic Functions

2.1.1. Static IP/DHCP

There are two ways for module to get IP address: Static IP and DHCP.

Static IP: Default setting of module is Static IP and default IP is 192.168.0.7. When user set module in Static IP mode, user need set IP, subnet mask and gateway and must pay attention to the relation among IP, subnet mask and gateway.

DHCP: Module in DHCP mode can dynamically get IP, Gateway, and DNS server address from Gateway Host. When user connect directly to PC, module can't be set in DHCP mode. Because common computer does not have the ability to assign IP addresses.

User can change Static IP/DHCP by setup software. Setting diagram as follow:

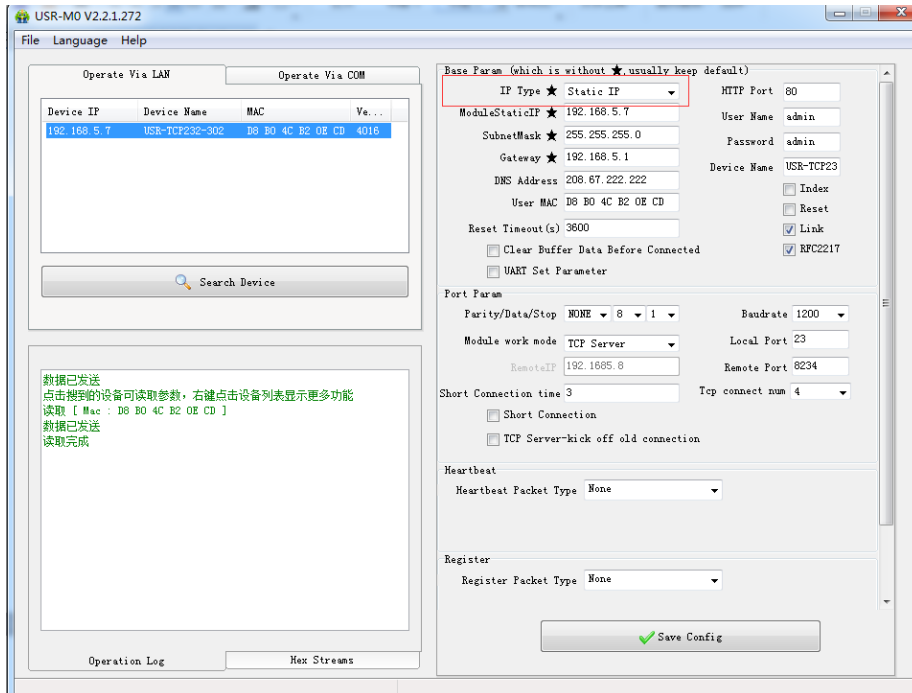


Figure 8 Static IP/DHCP

2.1.2. Restore default settings

Hardware: User can press Reload over 5 seconds and less than 15 seconds then release to restore default settings.

Software: User can use setup software to restore default settings.

AT command: User can enter AT command mode and use AT+RELD to restore default settings.

2.1.3. Upgrade Firmware Version

User can contact to salespersons for needed firmware version and upgrade by setup software as follow:

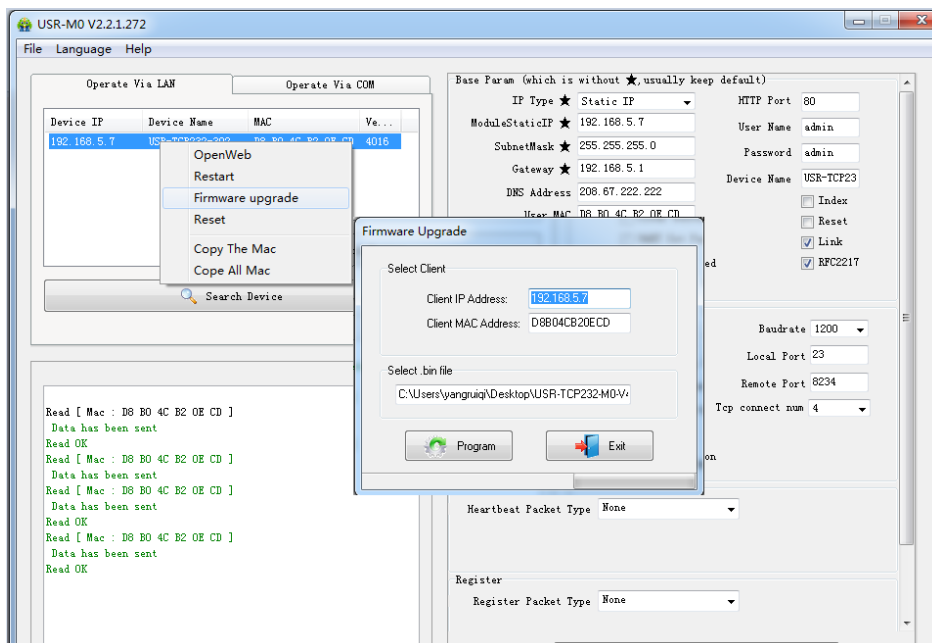


Figure 9 Upgrade firmware version

2.2. Socket functions

TCP232-306 socket support TCP Server, TCP Client, UDP Server, UDP Client and HTTPD Client.

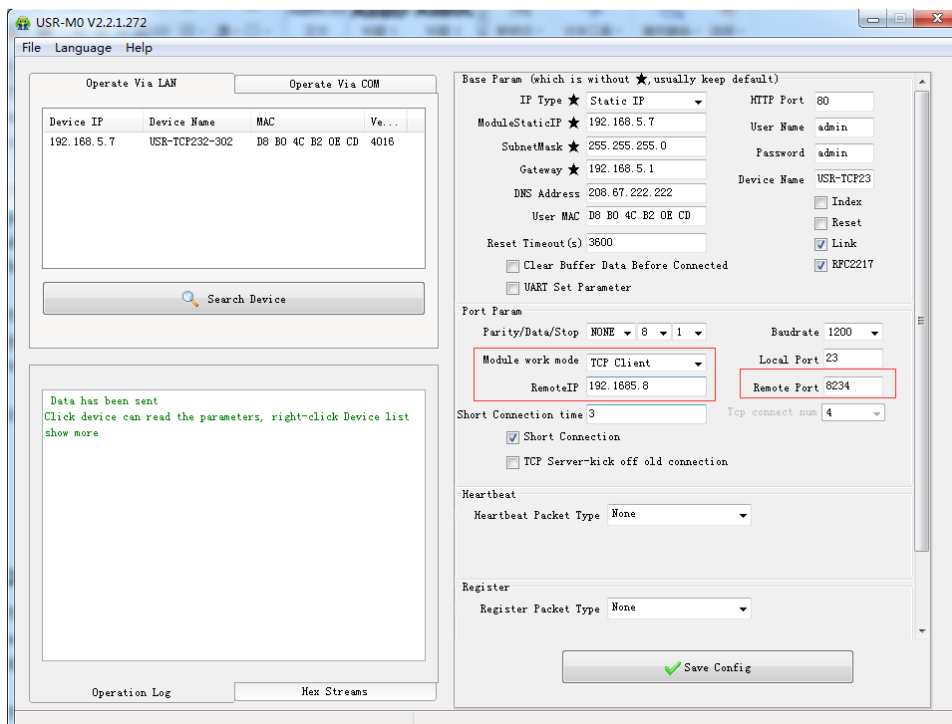
2.2.1. TCP Client

TCP Client provides Client connections for TCP network services. TCP Client device will connect to server to realize data transmission between the serial port and server. According to the TCP protocol, TCP Client has connection/disconnection status differences to ensure reliable data transmission.

TCP Client mode support Keep-Alive function: After connection is established, module will send Keep-Alive packets about every 15 seconds to check the connection and will disconnect then reconnect to TCP server if abnormal connection is been checked by Keep-Alive packets. TCP Client mode also support non-persistent function.

TCP232-306 work in TCP Client mode need connect to TCP Server and need set the parameters: Remote Server Addr and Remote Port Number. TCP232-306 work in TCP Client won't accept other connection request except target server and will access server with random local port if user set local port to zero.

User can set TCP232-306 in TCP Client mode and related parameters by setup software or web server as follows:



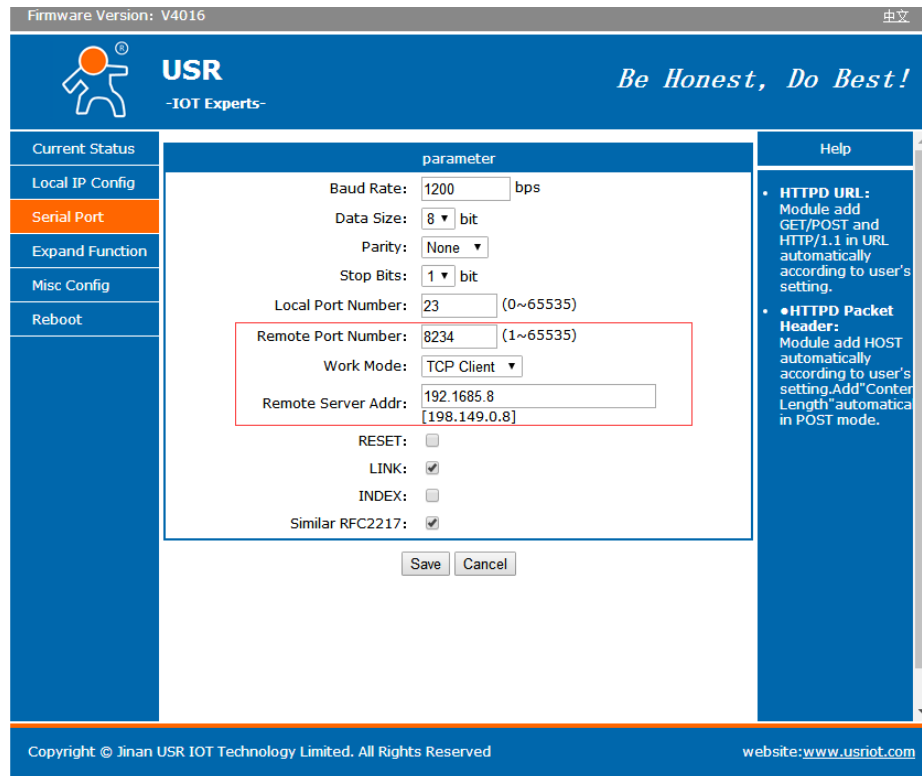


Figure 10 TCP Client

2.2.2. TCP Server

TCP Server will listen network connections and build network connections, commonly used for communication with TCP clients on a LAN. According to the TCP protocol, TCP Server has connection/disconnection status differences to ensure reliable data transmission.

TCP Server mode also support Keep-Alive function.

TCP232-306 work in TCP Server mode will listen local port which user set and build connection after receiving connection request. Serial data will be sent to all TCP Client devices connected to TCP232-306 in TCP Server mode simultaneously.

TCP232-306 work in TCP Server support 16 client connections at most and will kick off oldest connection beyond maximum connections(User can enable/disable this function by web server).

User can set TCP232-306 in TCP Server mode and related parameters by setup software or web server as follows:

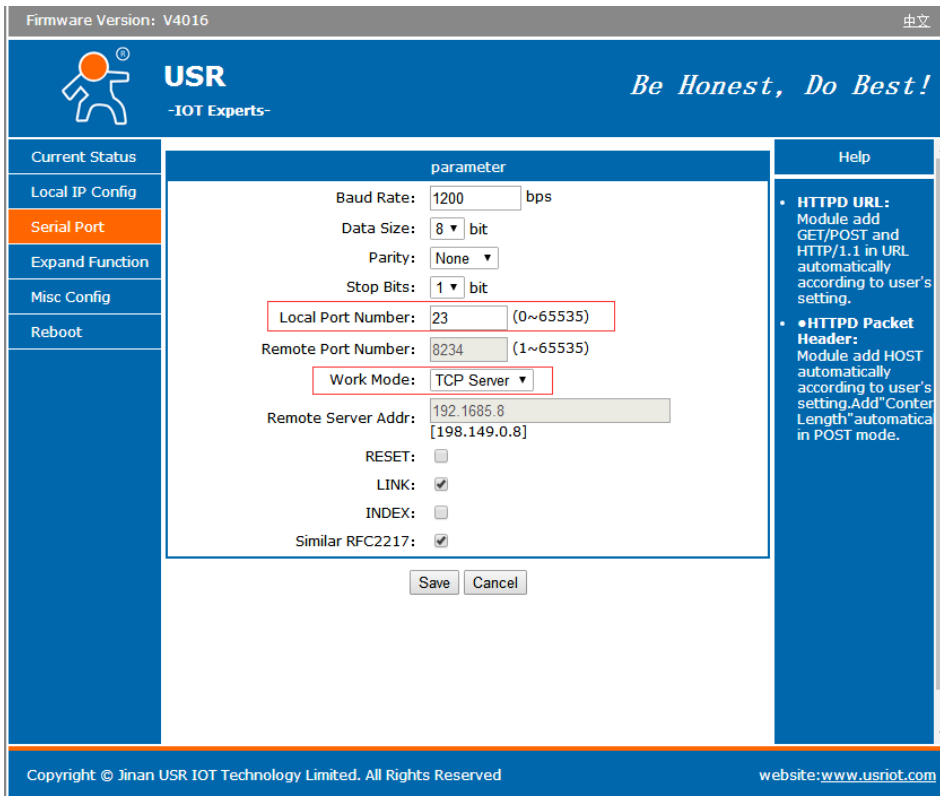
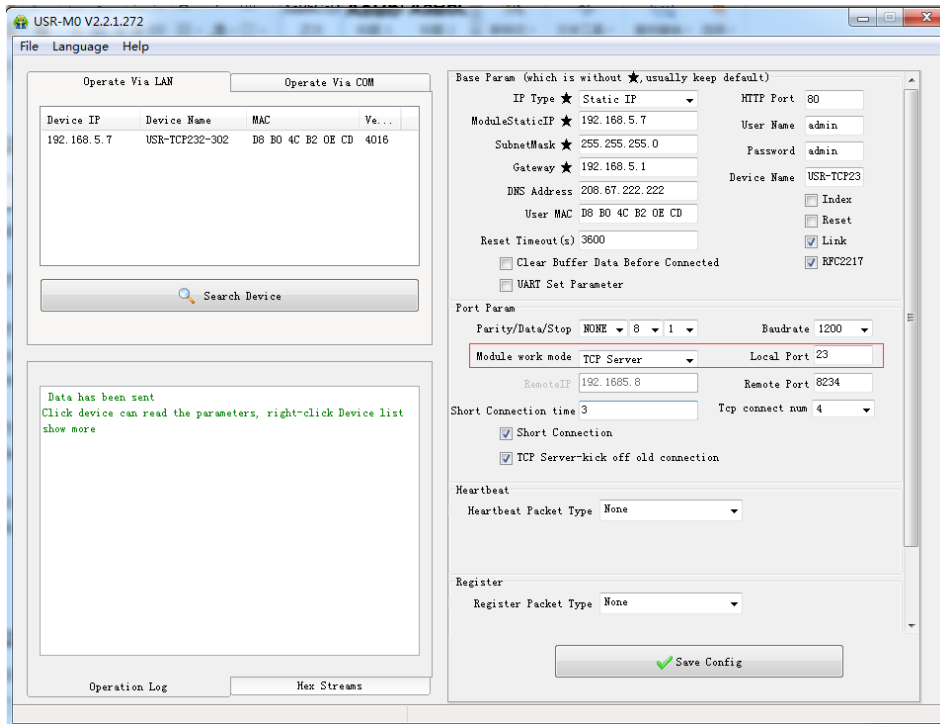


Figure 11 TCP Server

2.2.3. UDP Client

UDP transport protocol provides simple and unreliable communication services. No connection connected /disconnected.

In UDP Client mode, TCP232-306 will only communicate with target IP/Port. If data not from target IP/Port, it won't be received by TCP232-306.

In UDP Client mode, if user set remote IP as 255.255.255.255, TCP232-306 can broadcast to entire network segment and receive broadcast data. After firmware version 4015, 306 support broadcasting in same network segment.(Such like xxx.xxx.xxx.255 broadcasting way).

User can set TCP232-306 in UDP Client mode and related parameters by setup software or web server as follows:

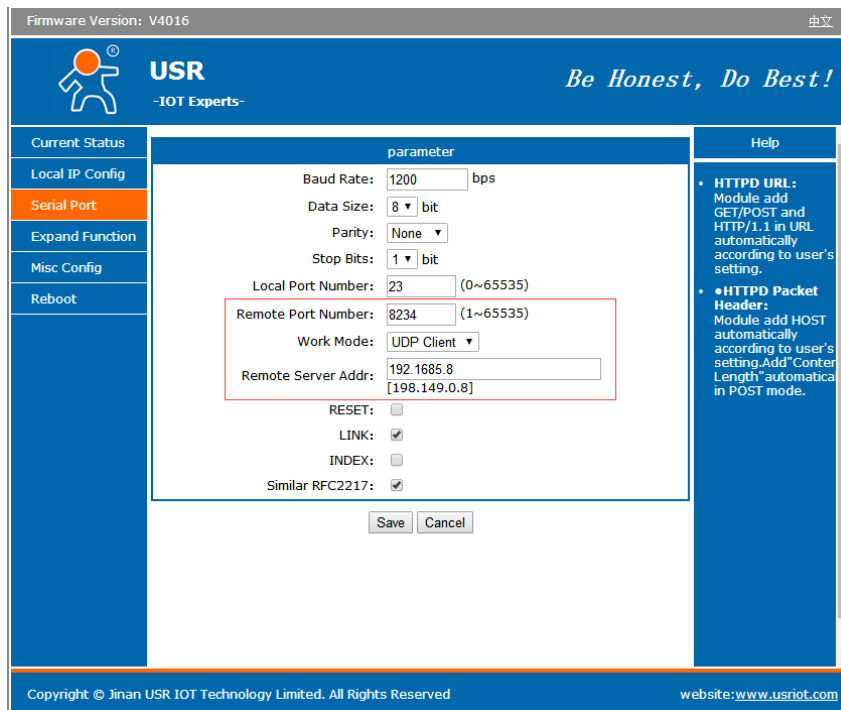
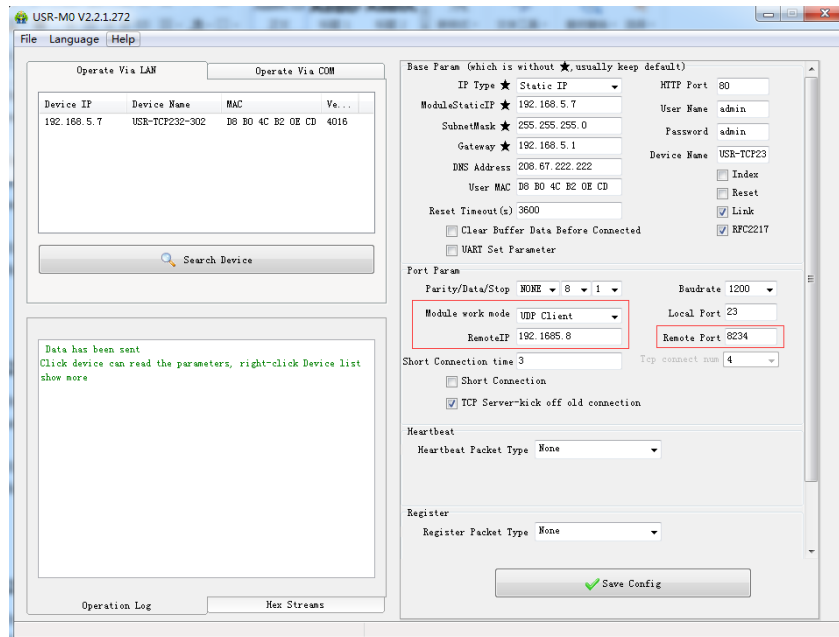


Figure 12 UDP Client

2.2.4. UDP Server

In UDP Server mode, TCP232-306 will change target IP every time after receiving UDP data from a new IP/Port and will send data to latest communication IP/Port.

User can set TCP232-306 in UDP Server mode and related parameters by setup software or web server as follows:

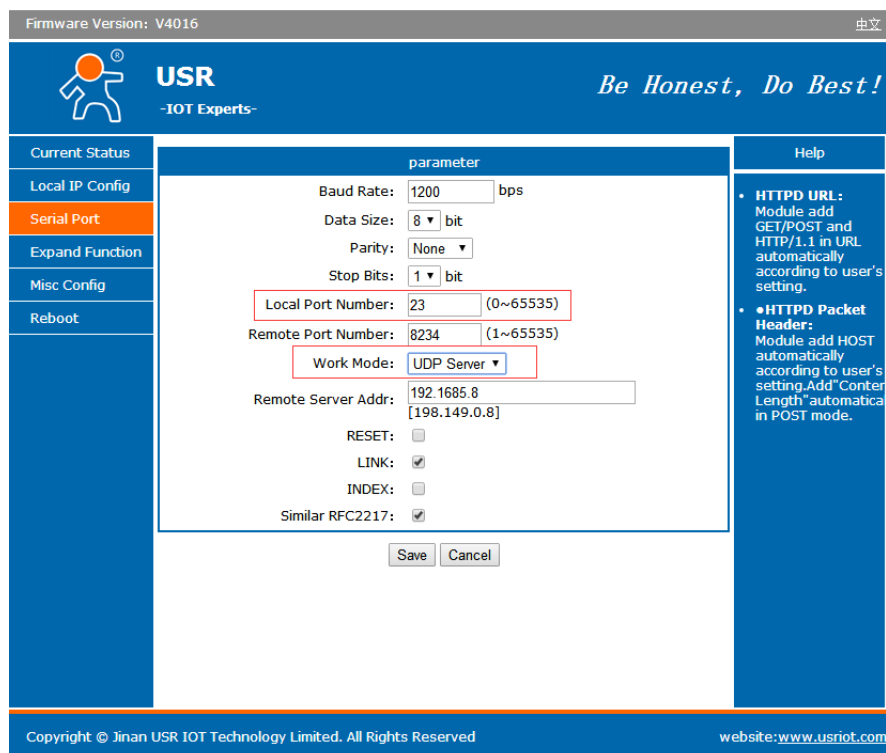
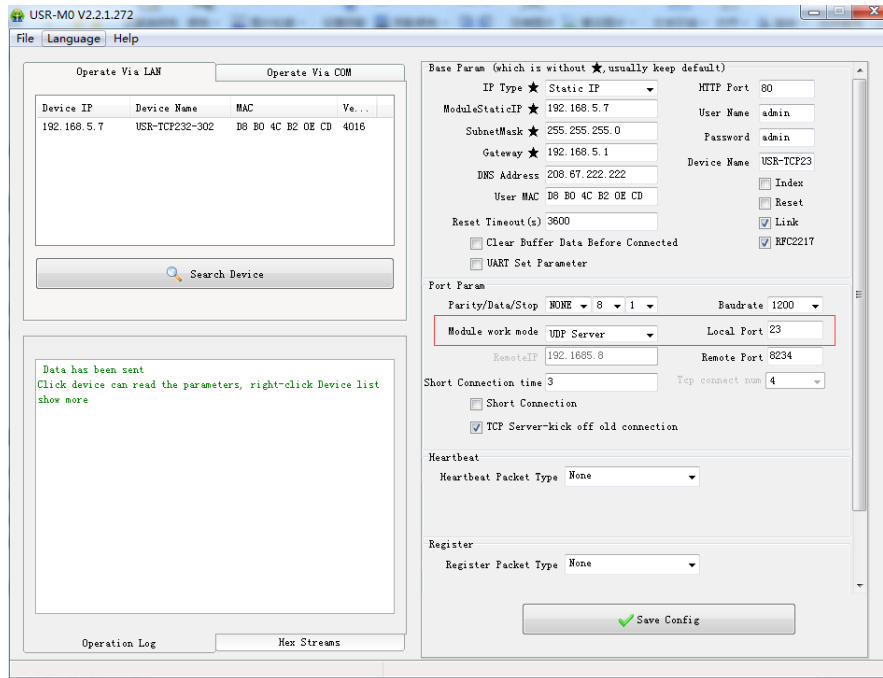


Figure 13 UDP Server

2.2.5. HTTPD Client

In HTTPD Client mode, TCP232-306 can achieve data transmission between serial port device and HTTP server. User just need set TCP232-306 in HTTPD Client and set the HTTPD header, URL and some other related parameters, then can achieve data transmission between serial port device and HTTP server and don't need care about the HTTP format of data.

User can set TCP232-306 in HTTPD Client mode and related parameters by web server as follow:

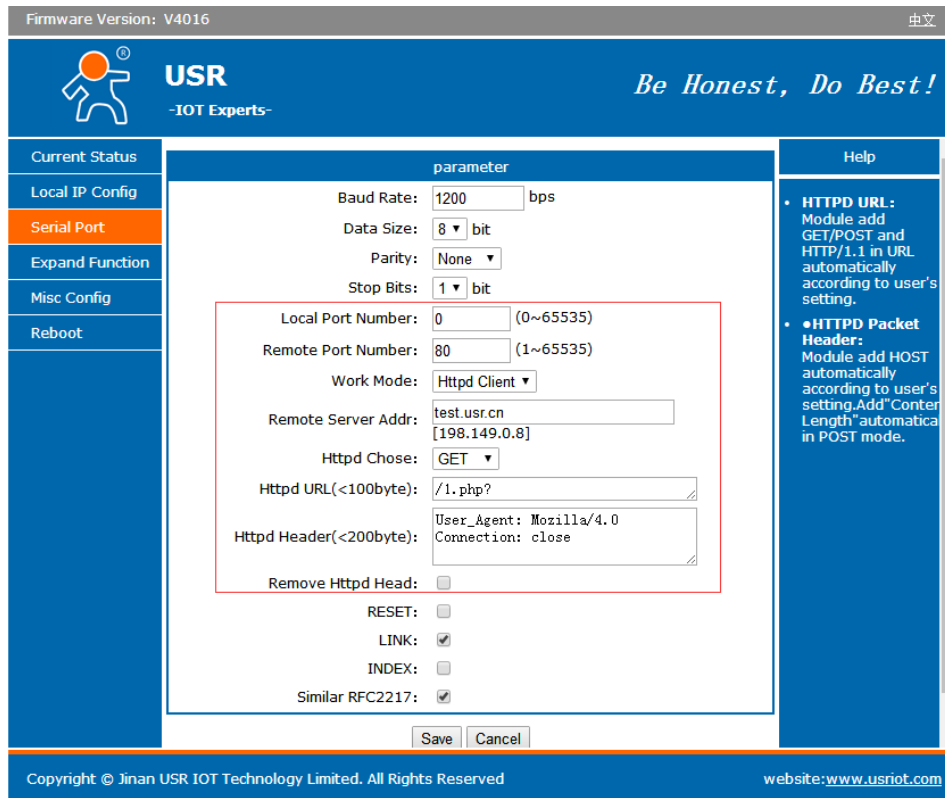


Figure 14 HTTPD Client

2.3. Serial port

TCP232-306 support RS232/RS485/RS422. User can refer to [1.2.2. DB9 Pin definition](#) [1.2.3. RS422/RS485 Pin definition](#) to connect and RS232/RS485/RS422 can't be used simultaneously.

2.3.1. Serial port basic parameters

| Parameters | Default | Range |
|------------|---------|------------------------------|
| Baud rate | 115200 | 600~230.4Kbps |
| Data bits | 8 | 5~8 |
| Stop bits | 1 | 1~2 |
| Parity | None | None, Odd, Even, Mark, Space |

Figure 15 Serial port parameters

2.3.2. VCOM Application

User can download VCOM software from <http://www.usriot.com/usr-vcom-virtual-serial-software/>. Through this software user can set up connection between TCP232-306 and virtual serial to solve the problem that traditional equipment PC software used in serial port communication way.

2.3.3. Serial Package Methods

For network speed is faster than serial. Module will put serial data in buffer before sending it to network. The data will be sent to Network as Package. There are 2 ways to end the package and send package to network - Time Trigger Mode and Length Trigger Mode.

TCP232-306 adopt fixed Package time (four bytes sending time) and fixed Package length (400 bytes).

2.3.4. Baud Rate Synchronization

When module works with USR devices or software, serial parameter will change dynamically according to network protocol. Customer can modify serial parameter by sending data conformed to specific protocol via network. It is temporary, when restart module, the parameters back to original parameters.

User can adopt Baud Rate Synchronization function by setup software as follows:

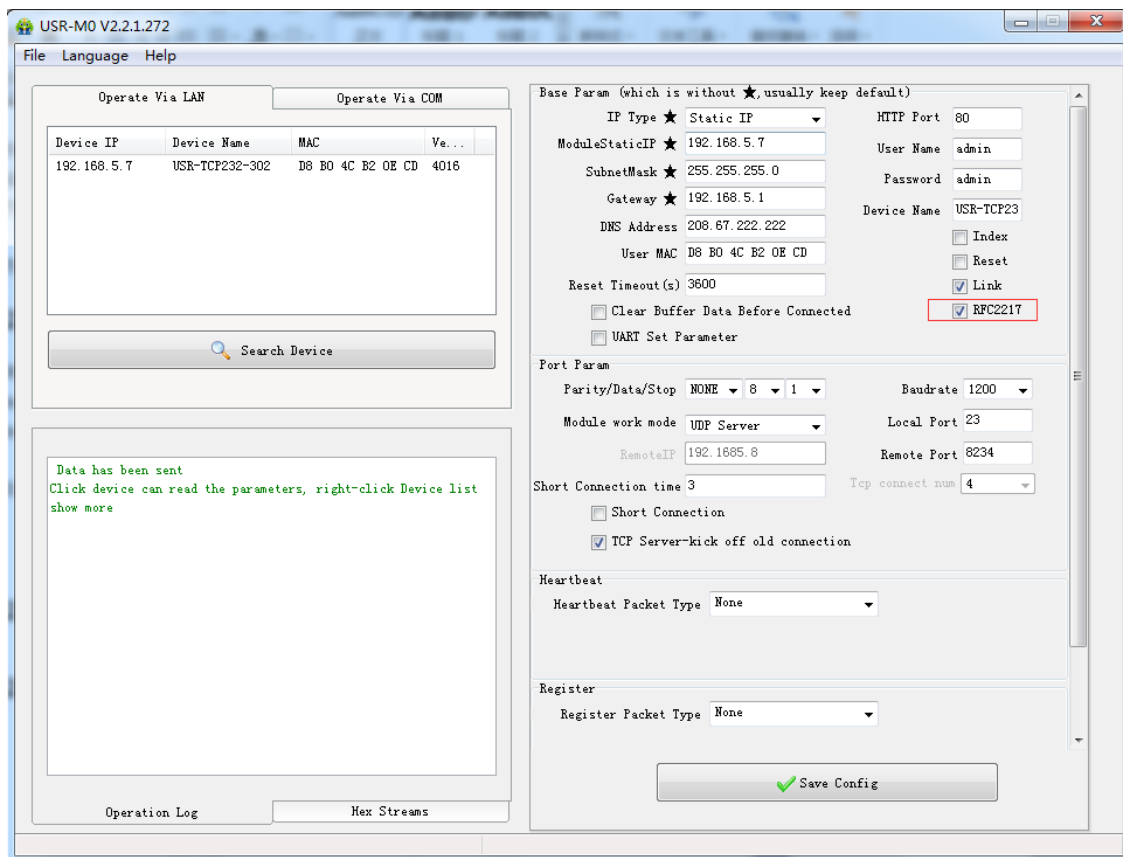


Figure 16 Baud Rate Synchronization

2.4. Features

2.4.1. Identity Packet Function

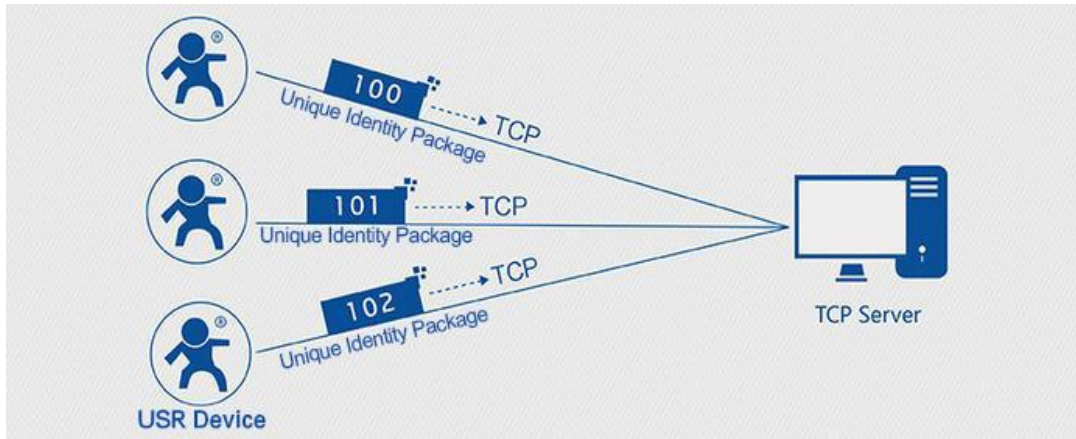


Figure 17 Identity Packet application diagram

Identity packet is used for identify the device when module works as TCP client/UDP client. There are two sending methods for identity packet.

- Identity data will be sent when connection is established.
- Identity data will be add on the front of every data packet.

Identity packet can be MAC address or user editable data (User editable data at most 40 bytes). User can set TCP232-306 with Identity Packet function by web server as follow:

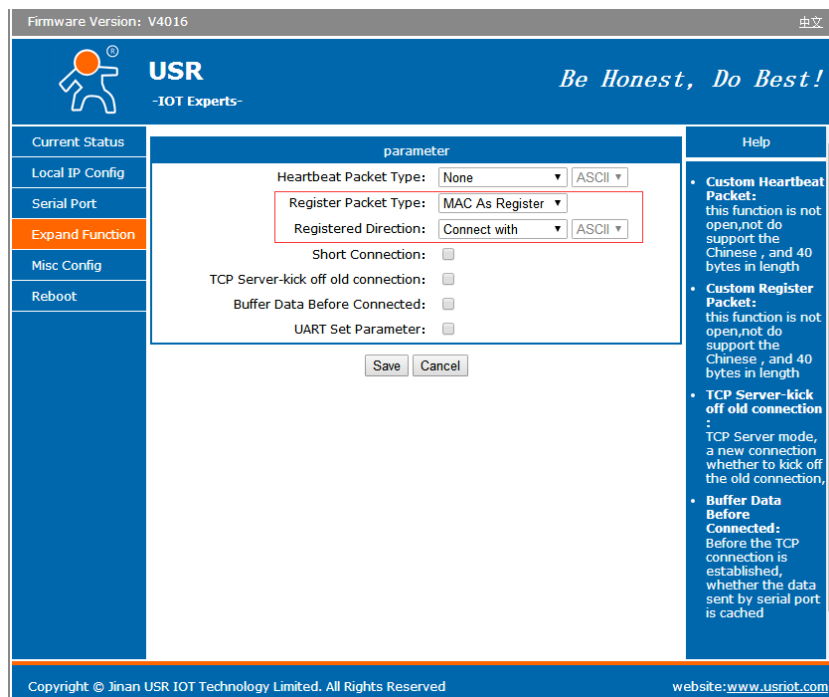


Figure 18 Identity Packet

2.4.2. Heartbeat Packet Function

Heartbeat packet: Module will output heartbeat data to serial or network periodic. User can configure the heartbeat data and time interval. Serial heartbeat data can be used for polling Modbus data. Network heartbeat data can be used for showing connection status and keep the connection (only take effect in TCP/UDP Client mode). Heartbeat packet allow 40 bytes at most.

User can set TCP232-306 with Heartbeat Packet function by web server as follow:

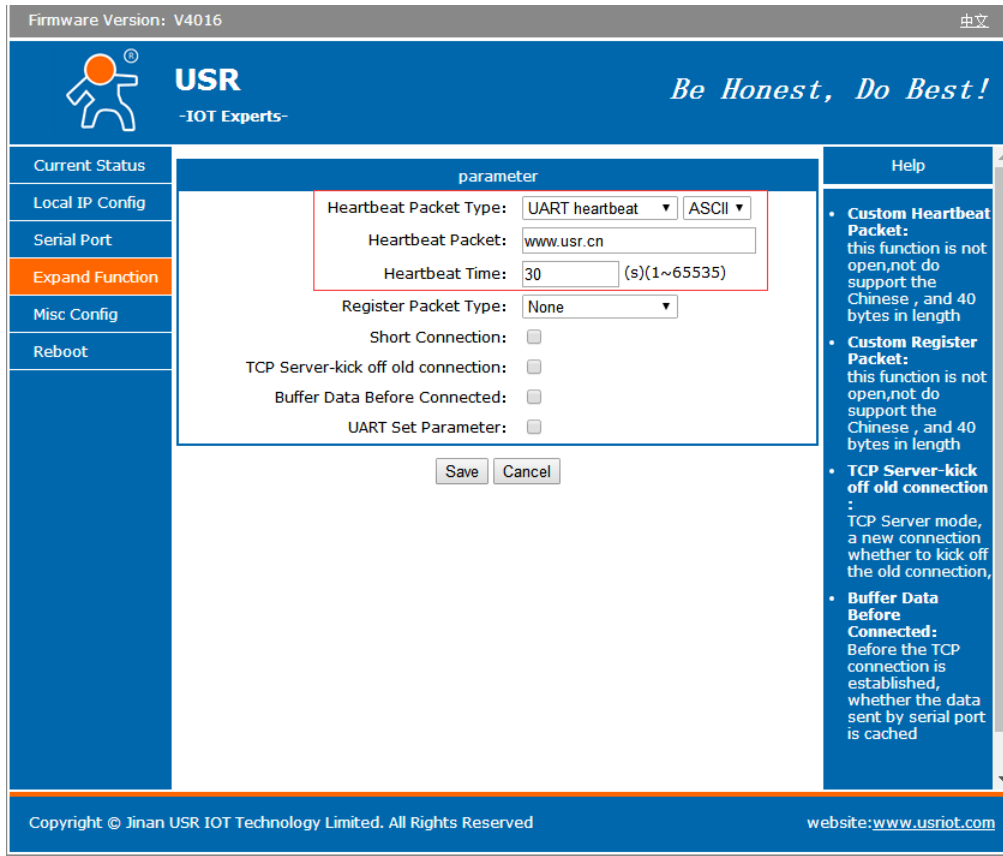


Figure 19 Heartbeat Packet

2.4.3. Editable Web server

TCP232-306 support user modify the web server based on template according to needs, then use related tool to upgrade. If user have this demand can contact to our salespersons for web server source and tool.

2.4.4. Reset function

When 306 work in TCP Client mode, 306 will connect to TCP Server. When user open Reset function, 306 will restart after trying connecting to TCP Server 30 times but still can't connect to.

User can enable/disable the Reset function by setup software as follow:

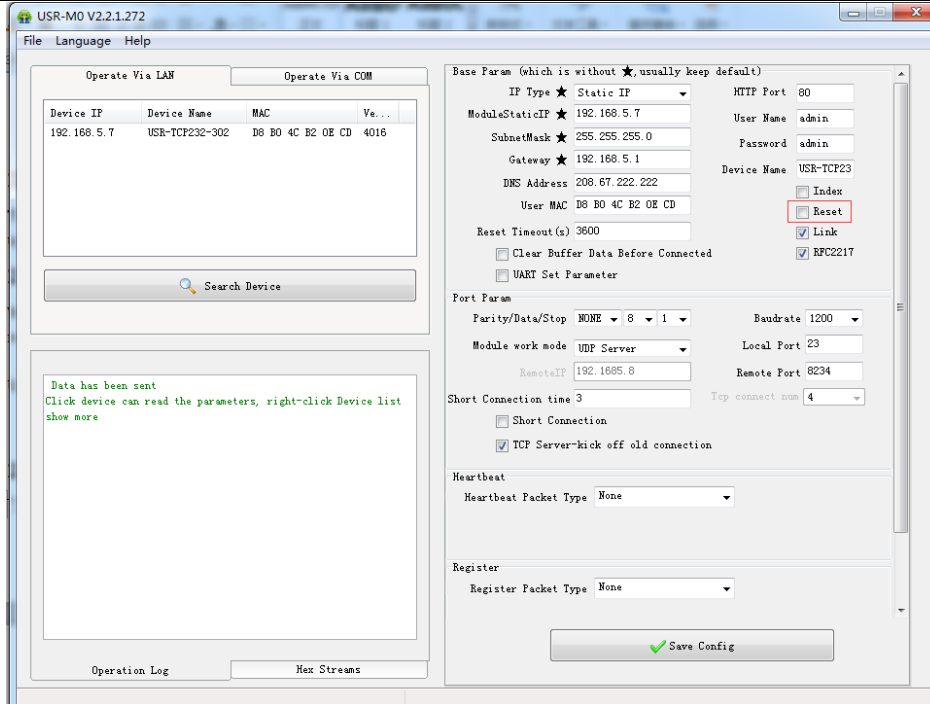


Figure 20 Reset function

2.4.5. Index function

Index function: Used in situation when 306 work in TCP Server mode and establish more than one connection to TCP Client. After open Index function, 306 will mark every TCP Client to distinguish them. User can send/receive data to/from different TCP Client according to their unique mark.

User can enable/disable the Index function by setup software as follow:

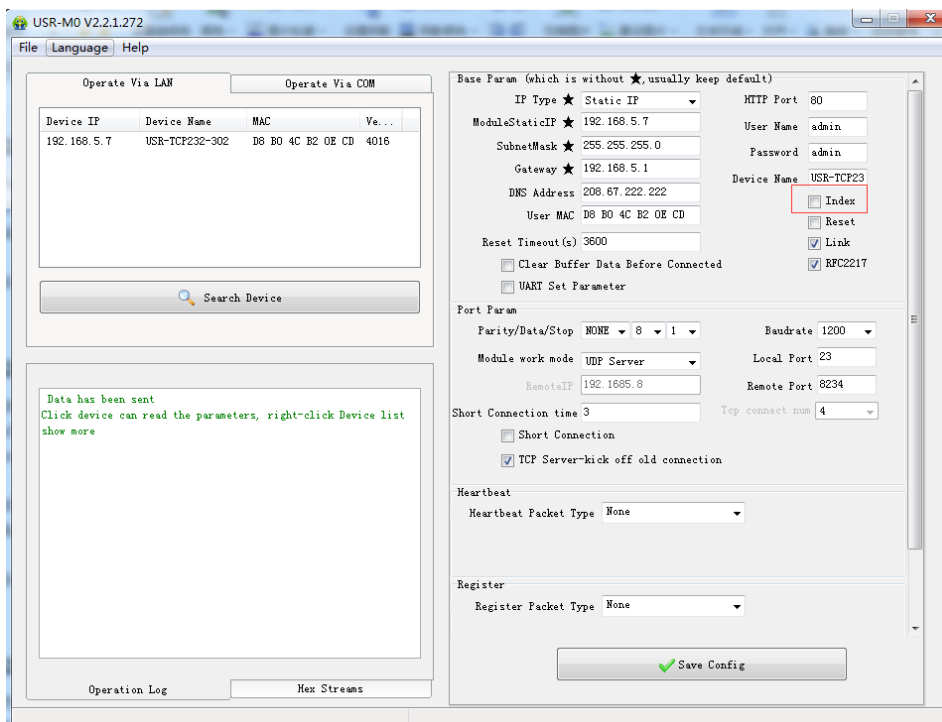


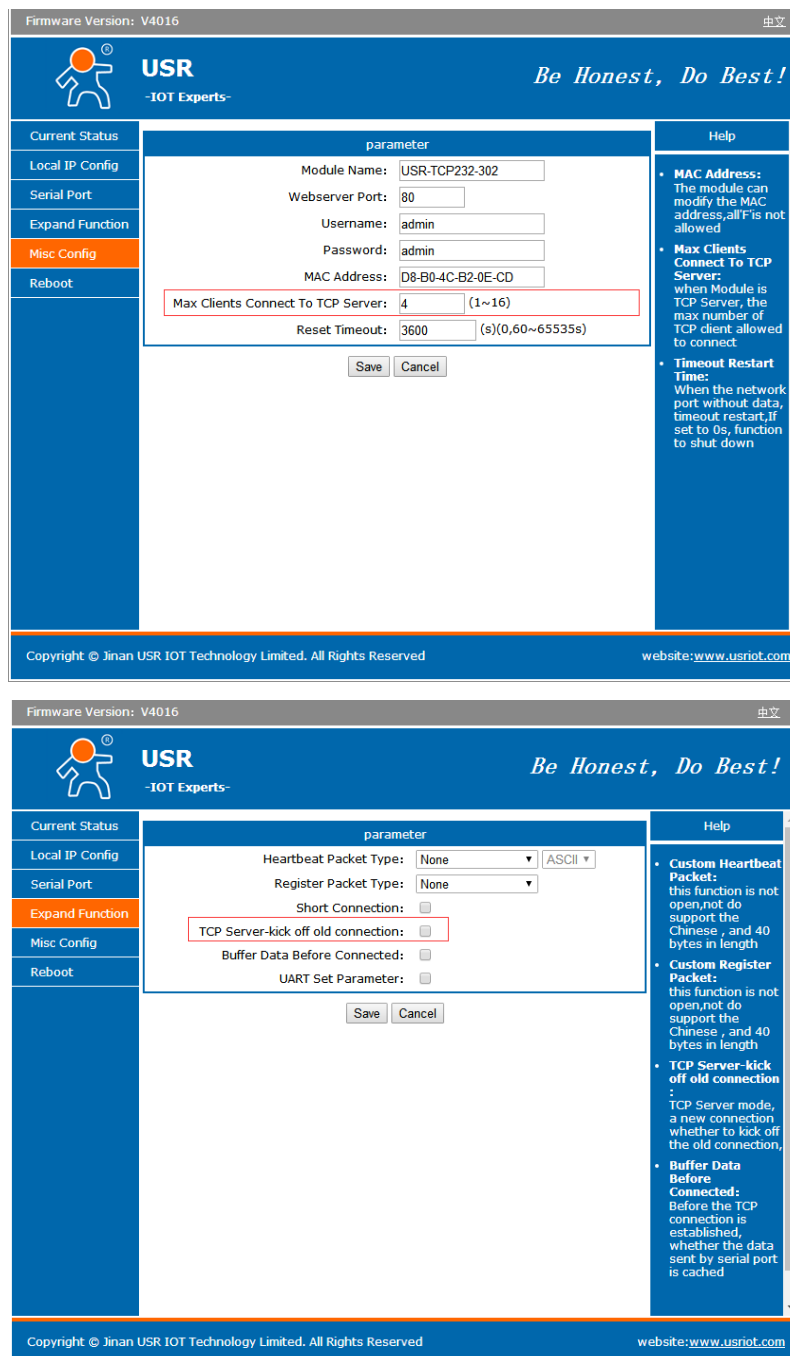
Figure 21 Index function

2.4.6. TCP Server setting

306 work in TCP Server mode allow at most 16 TCP Clients connection. Default is 4 TCP Clients and user can change maximum TCP Clients connection by web server. When TCP Clients more than 4, user need make every connection data less than 200 bytes/s.

If TCP Clients connected to 306 exceed maximum TCP Clients, user can enable/disable kick off old connection function by web server.

User can set above TCP Server settings by web server as follow:



The figure consists of two screenshots of the USR web interface, both showing the 'Misc Config' page. The top screenshot shows the 'parameter' section with the following settings: Module Name: USR-TCP232-302, Webserver Port: 80, Username: admin, Password: admin, MAC Address: D8-B0-4C-B2-0E-CD, Max Clients Connect To TCP Server: 4 (1~16), and Reset Timeout: 3600 (s)(0,60~65535s). The bottom screenshot shows the 'parameter' section with the following settings: Heartbeat Packet Type: None, Register Packet Type: None, Short Connection: [checkbox], TCP Server-kick off old connection: [checkbox], Buffer Data Before Connected: [checkbox], and UART Set Parameter: [checkbox].

Figure 22 TCP Server setting

2.4.7. Non-persistent Connection

TCP232-306 support non-persistent connection function in TCP Client mode. When TCP232-306 adopt this function, TCP232-306 will connect to server and send data after receiving data from serial port side and will disconnect to server after sending all the data to server and no data from serial port side or network side over a fixed time. This fixed time can be 2~255s, default is 3s. User can set TCP232-306 with non-persistent connection function by web server as follow:

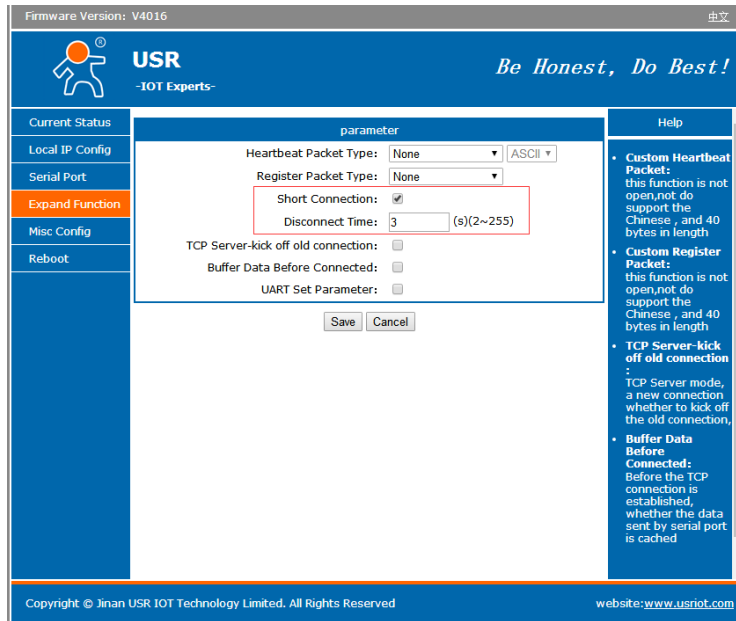


Figure 23 Non-persistent Connection

2.4.8. Timeout Reset function

Timeout reset function(no data reset): If network side no data transmission beyond a fixed time(User can set this fixed time between 60~65535s, default is 3600s. If user set a time less than 60s, this function will be disable), 306 will reset. User can set the Timeout Reset function by web server as follow:

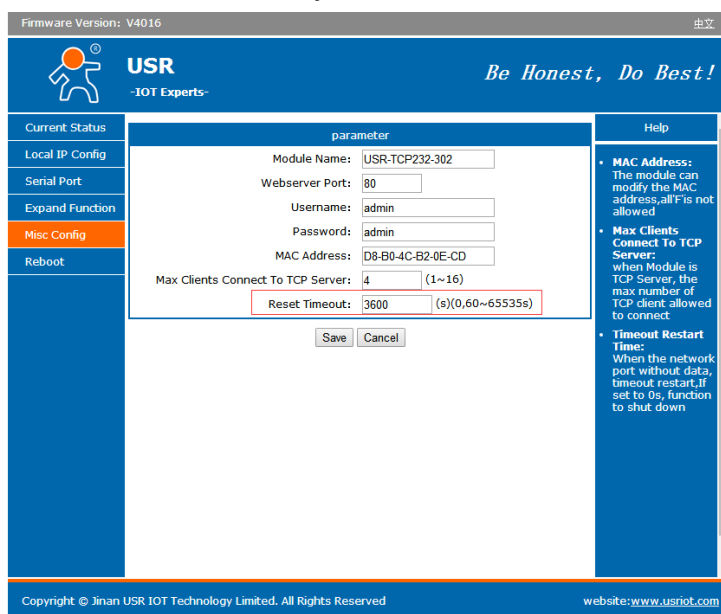


Figure 24 Timeout Reset function

3. Parameter Setting

There are three ways to configure USR-TCP232-306. They are setup software configuration, web server configuration and AT command configuration.

3.1. Setup software Configuration

User can download setup software from <http://www.usriot.com/usr-m0-setup-software/>. When user want to configure the TCP232-306 by setup software, user can run setup software, search TCP232-306 in same LAN and configure the TCP232-306 as follow:

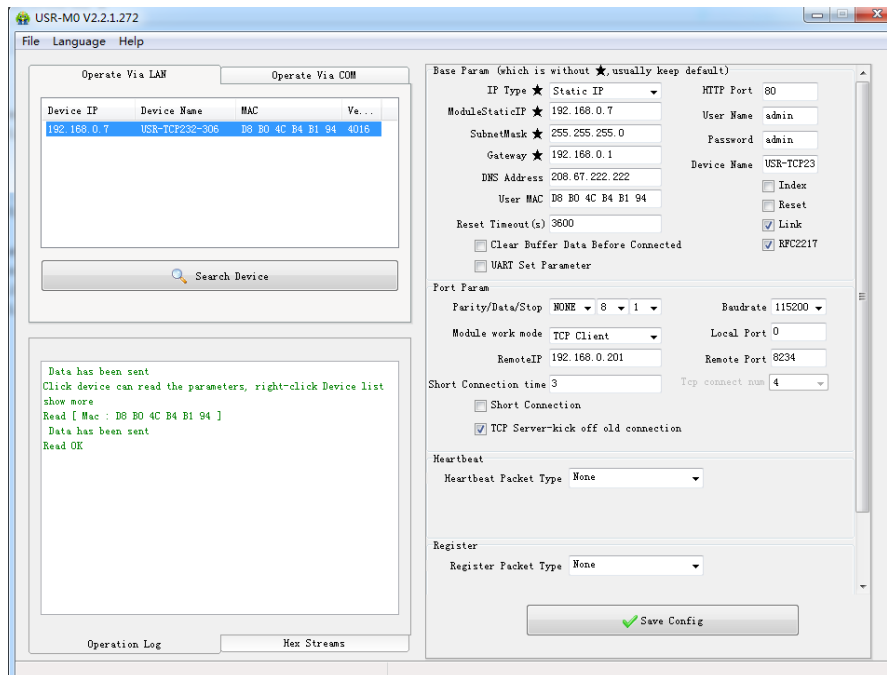


Figure 25 Setup software

After researching TCP232-306 and clicking TCP232-306 to configure, user need log in with user name and password. Default user name and password both are admin. If user keep the default parameters, it is not necessary to log in.

3.2. Web Server Configuration

User can connect PC to TCP232-306 through LAN port and enter web server to configure.

Web server default parameters as follow:

| Parameter | Default settings |
|-----------------------|------------------|
| Web server IP address | 192.168.0.7 |
| User name | admin |
| Password | admin |

Figure 26 Web server default parameters

After firstly connecting PC to TCP232-306, user can open browser and enter default IP 192.168.0.7 into address bar, then log in user name and password, user will enter into web server. Web server screenshot as follow:



The screenshot shows the USR web server interface. At the top, it displays 'Firmware Version: V4016' and a language selector '中文'. The main header features the USR logo and the slogan 'Be Honest, Do Best!'. Below the header is a navigation menu with options: 'Current Status', 'Local IP Config', 'Serial Port', 'Expand Function', 'Misc Config', and 'Reboot'. The 'Current Status' section is active, showing a table of parameters:

| parameter |
|---|
| Module Name: USR-TCP232-306 |
| Current IP Address: 192.168.5.111 |
| MAC Address: d8-b0-4c-b4-b1-94 |
| Remote IP/TX/RX-1 : 0.0.0.0 / 0 byte / 0 byte |
| -2 : 0.0.0.0/ 0 byte / 0 byte |
| -3 : 0.0.0.0/ 0 byte / 0 byte |
| -4 : 0.0.0.0/ 0 byte / 0 byte |
| -5 : 0.0.0.0/ 0 byte / 0 byte |
| TX Count/RX Count: 0/ 0 bytes |

To the right of the parameter table is a 'Help' section with the following content:

- **Current IP Address:** default IP of module
- **Remote IP/TX/RX:** IP of server or device connecting with module;reset for disconnect TX/RX;data volume that each server or device communicates with module;reset for disconnect
- **TX Count/RX Count:** a total of data volume that servers or devices communicate with module;reset for power off

At the bottom of the page, there is a copyright notice: 'Copyright © Jinan USR IOT Technology Limited. All Rights Reserved' and the website address: 'website:www.usriot.com'.

Figure 27 Web Server

3.3. AT Command

We have specific user manual for AT commands.

3.3.1. Serial AT Command

In transparent mode, user can enter AT command mode, then user can send AT command to module. For entering AT command mode, please refer to this FAQ: <http://www.usriot.com/enter-serial-command-mode/>.

4. Contact Us

Company: Jinan USR IOT Technology Limited

Address: Floor 11, Building 1, No. 1166 Xinluo Street, Gaoxin District, Jinan, Shandong, 250101, China

Web: www.usriot.com

Support: h.usriot.com

Email: sales@usr.cn

Tel: 86-531-88826739/86-531-55507297

5. Disclaimer

This document provide the information of USR-TCP232-306 products, it hasn't been granted any intellectual property license by forbidding speak or other ways either explicitly or implicitly. Except the duty declared in sales terms and conditions, we don't take any other responsibilities. We don't warrant the products sales and use explicitly or implicitly, including particular purpose merchantability and marketability, the tort liability of any other patent right, copyright, intellectual property right. We may modify specification and description at any time without prior notice.

6. Update History

2017-09-21 V1.0.1.01 Established.