



## Quick Start Guide

### 4G Wireless Router with Industrial Lead Rail MODEL USR-G806



#### 1. Hardware Installation

- Insert a SIM card
- Install WiFi, 4G antenna accordingly
- Connect computer and router via Ethernet cable
- Configure the computer, choose DHCP
- Power on the router with DC 12V power adapter



#### 2. Router Default Parameter

##### ■ Logon the router

Input <http://192.168.1.1> in browser, then press enter, refer to below information to logon the router

Item	Default Parameter
SSID	USR-G806-XXXX
Password for AP	www.usr.cn
LAN Default IP Address	192.168.1.1
User Name	root
Password	root

##### ■ Configure APN

Please confirm below APN information with your local operator, then configure the right APN information

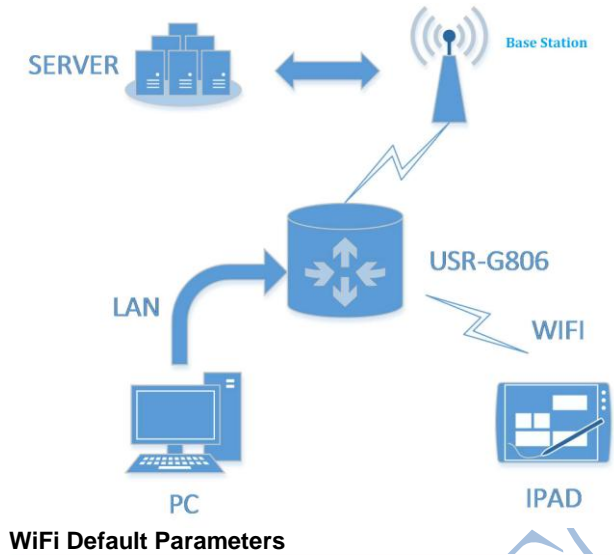
Item	Parameter
APN address	Please confirm the correct APN address
User name	Please input correct user name
Password	Please input correct password
PDP type	Default
Authentication Way	Default
Others	Default

##### ■ Surf the Internet

After the configuration, then your computer can access Internet via LAN port or WiFi

Notes:

USR-G806 router can be an AP  
Support 24 STA access



#### WiFi Default Parameters

Item	Parameter
SSID	USR-G806-XXXX (MAC address)
Password	www.usr.cn
Channel	Auto
Bandwidth	40MHz
Encryption Way	WPA2-PSK

#### 3. Documents download link

- <http://www.usriot.com/p/4g-wireless-routers-industrial-lead-railtd-lte-fdd-lte-network/>

#### 4. Contact Information

Ticket System: [h.usriot.com](http://h.usriot.com)

Website: [www.usriot.com](http://www.usriot.com)

Email: [sales@usriot.com](mailto:sales@usriot.com)